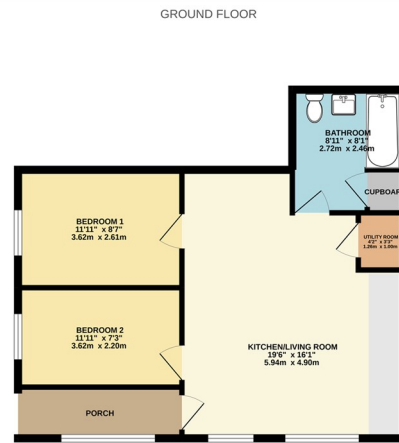




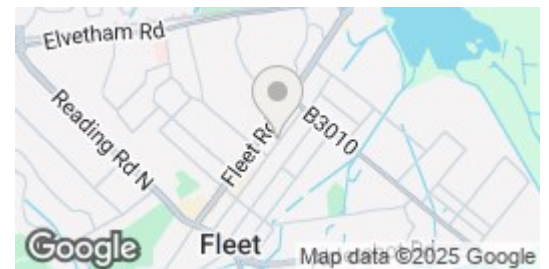
Elma House | Albert Street | Fleet | GU51 3RJ

£1,400 PCM

Waterfords W
Residential Sales & Lettings



Energy Efficiency Rating		Current	Potential
Very energy efficient - lower running costs			
(92 plus)	A		
(81-91)	B		
(69-80)	C		
(55-68)	D		
(39-54)	E		
(21-38)	F		
(1-20)	G		
Not energy efficient - higher running costs			
England & Wales			
		EU Directive 2002/91/EC	



Description

Waterfords are delighted to present this exquisite two-bedroom maisonette, available for rent on an unfurnished basis from 25th March 2025. This charming property offers spacious living areas and a welcoming atmosphere, perfect for those seeking a comfortable home. Additionally, one parking permit will be provided for your convenience. Don't miss out on this fantastic opportunity to make this maisonette your new home!

Key features

- Modern Building
- Ground Floor Maisonette
- Unfurnished
- Permit Parking
- Minimum 12 Month Let
- Two Bedroom
- Very Good Sized Property - Measuring 64sqm plus private porch
- Available from 25th March 2025
- Private Porch
- Council Tax Band to be confirmed by Council



39 The Hart Centre
Fleet
Hampshire
GU51 3LA
01252 623330
hampshirelettings@waterfords.co.uk
<https://www.waterfords.co.uk/>